

RG

NAXOS HOTEL



LOCATION & GUEST ROOMS FACILITIES

The RG Naxos Hotel is located along the eastern coast of Sicily, offering to all Guests an amazing view of Etna volcano and the sea.

Naxos is the first greek colony of Sicily and offers interesting archaeological digs, walking distance from the Hotel.

Taormina is only 10 minutes away.

Spacious and comfortable, all 296 rooms are nicely decorated with Italian classic furnitures. All the rooms offer key-card security system, safe, air conditioning, direct dialing telephone, high-speed internet, flat screen satellite TV, minibar, alarm clock radio and mp3 player.

Guest Rooms	80
Superior with sea view	74
Family Rooms	17
Deluxe with sea view	97
Corner Suites	9
Duplex Suites	16
Presidential Suites	3

Check-in 2:00 pm – Check-out 12:00 pm

LEISURE & BUSINESS FACILITIES

Luxuriant Mediterranean garden overlooking the sea

Fully equipped private beach

Outdoor swimming pool and solarium

Exclusive spa wellness centre “Our Spa”

Heated, thermal swimming pool

Fitness Centre open 24h

Hair salon

Gift shop

700 sqm exhibition area

Nearby Leisure Facilities

- Tennis and soccer courts
- Golf course
- Diving courses
- Excursion and Sightseeing Tours
- Restaurants and shops



CONFERENCE & BANQUETING

The RG Naxos Hotel boasts 11 multifunctional congress rooms with a total capacity of 2000 people.

All conference rooms offer natural light, internet connection and air conditioning.

Tindari plenary room, with modular partitioning walls, can host up to 950 participants; all adjacent conference rooms can accommodate from 10 to 250 delegates. The conference area is connected through a wide foyer and have direct access to the Mediterranean garden. The RG Naxos Hotel offers refined indoor and outdoor location where to organize business lunch, buffet, cocktail and gala dinner. The traditional cuisine by our chefs, along with the accurate banqueting service and all decoration and ornaments will make unique your event.

BARS & RESTAURANTS

The RG Naxos Hotel offers to all Guests every morning a plentiful international breakfast buffet along with home-made, traditional pastries, served in sea view main restaurant.

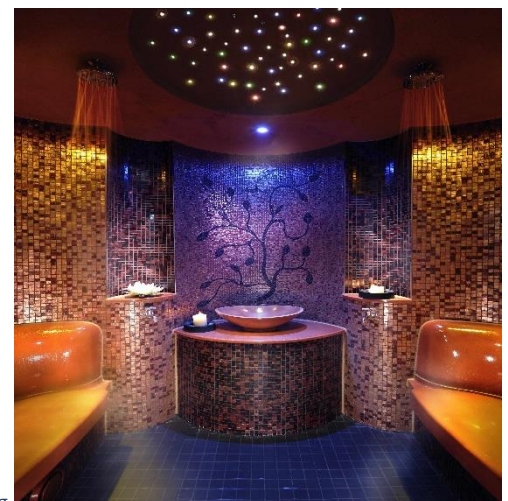
The à la carte restaurant “La Sciarà” is the ideal place where to try Sicilian dishes, in the indoor cozy room or in the lovely pool terrace overlooking the Mediterranean sea.

The Panarea terrace is the perfect choice for easy lunch and dinner with amazing Etna and sea view, during summer months.

June to September, Il Molo is the beach “trattoria” with an open kitchen where to relax and try light fish dishes.

The Lobby bar is the perfect place where to relax sipping international cocktails, beers, or having a traditional home-made sundae.

Beach & Pool Bars are open during summer months only and offer refreshing drinks, sandwiches and snacks.



GENERAL INFORMATION

Currenty: Euro

Parking: on payment

To book:

- bookingnaxos@russottigh.com
- eventinaxos@russottigh.com
- www.rgnaxoshotel.com
- +39 0942 51931

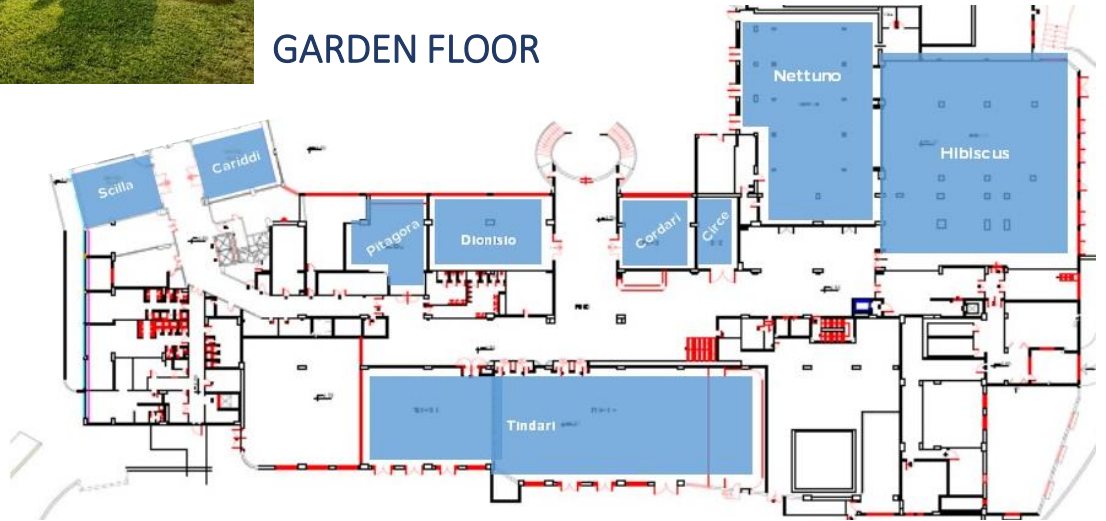




LOBBY FLOOR



GARDEN FLOOR



Theatre	U-Shape	Boardroom	Classroom	Cabaret	Banquet	Dinner Dance	Reception	Floor	Dimensions (Ceiling Height, Length, Width)	Area (sqm)	Air-conditioning	3 Phase	Sound System	Blackout	Natural Daylight
---------	---------	-----------	-----------	---------	---------	--------------	-----------	-------	--------------------------------------------	------------	------------------	---------	--------------	----------	------------------

CONGRESS CENTRE

Tindari	950	100	120	400	300	450	400	850	0	3,50x50x14	707	●	●	●	●	●
Tindari A	400	60	60	220	150	250	220	350	0	3,50x33,60x14,40	476	●	●	●	●	●
Tindari B	200	50	50	100	90	150	120	200	0	3,50x16,50x11,60	185	●	●	●	●	●
Hibiscus	300	50	50	120	300	550	450	600	0	3,70x25x27	675	●	-	●	●	●
Nettuno	250	50	50	130	180	250	130	300	0	2,70x27x18	486	●	-	●	●	●
Hibiscus + Nettuno	-	-	-	-	-	1200	1000	1600	0	---	1280	●	-	●	●	●
Dionisio	110	40	40	50	-	-	-	-	0	2,80x16x9,50	155	●	-	●	●	●
Pitagora	70	20	20	24	-	-	-	-	0	2,80x10,75x11,80	107	●	-	●	●	●
Cordari	50	20	20	20	-	-	-	-	0	2,80x9,90x9,30	91	●	-	●	●	●
Circe	40	15	10	10	-	-	-	-	0	2,80x8,70x5,50	49	●	-	●	●	●
Scilla	60	20	20	24	-	-	-	-	0	2,80x10x5,80	67	●	●	●	●	●
Cariddi	60	20	20	24	-	-	-	-	0	2,80x9,60x7,70	73,50	●	●	●	●	●
Calipso	200	60	60	100	120	200	120	300	1	3,40x13,50x15,95	243	●	-	●	●	●